

TMV8000 / TSU2000 SERIES

Universal Voltage Delay-on-Make Timer

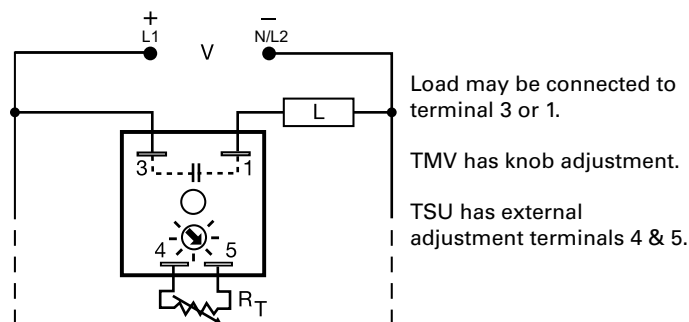


TMV8000



TSU2000

Wiring Diagram



Ordering Information

MODEL	INPUT VOLTAGE	ADJUSTMENT	TIME DELAY
TMV8000	24 to 240VAC/DC	Onboard	0.1 - 8m
TSU2000	24 to 240VAC/DC	External	5 - 480s

If you don't find the part you need, call us for a custom product 800-843-8848

Description

The TMV and TSU Series are universal voltage delay-on-make timers. Two models cover all the popular voltages and time delays. Available with knob or external adjust time delay. Its simple two terminals can easily be connected in series with a relay coil, contactor coil, solenoid, lamps, small motor, etc., to delay their energization, prevent short cycling or to sequence on various loads.

Operation (Delay-on-Make)

Upon application of input voltage, the time delay begins. The output is de-energized before and during the time delay. At the end of the time delay, the output energizes and remains energized until input voltage is removed.

Reset: Removing input voltage resets the time delay and output.

Features & Benefits

FEATURES	BENEFITS
Universal AC/DC operating voltage	Provides flexibility for use in all systems
Totally solid-state and encapsulated	No moving parts to arc and wear out over time and encapsulated to protect against shock, vibration, and humidity
Two terminal series connection with the load	Provides quick and easy installation for new or existing systems
1A steady, 10A inrush solid-state output	Provides 100 million operations in typical conditions

Accessories



P1004-95, P1004-95-X Versa-Pot
Panel mountable, industrial potentiometer recommended for remote time delay adjustment.



P1023-6 Mounting bracket
The 90° orientation of mounting slots makes installation/removal of modules quick and easy.



P0700-7 Versa-Knob
Designed for 0.25 in. (6.35 mm) shaft of Versa-Pot. Semi-gloss industrial black finish.



P1015-64 (AWG 14/16) Female Quick Connect
These 0.25 in. (6.35 mm) female terminals are constructed with an insulator barrel to provide strain relief.



P1015-18 Quick Connect to Screw Adapter
Screw adapter terminal designed for use with all modules with 0.25 in. (6.35 mm) male quick connect terminals.

Time Delay Relays

Dedicated - Delay-on-Make

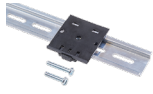
TMV8000 / TSU2000 SERIES

Accessories



C103PM (AL) DIN Rail

35 mm aluminum DIN rail available in a 36 in. (91.4 cm) length.



P1023-20 DIN Rail Adapter

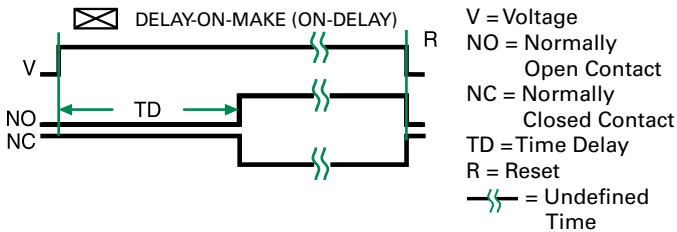
Allows module to be mounted on a 35 mm DIN type rail with two #10 screws.

Selection Guide

RT Selection Chart	
Time Delay*	
Seconds	RT Megohm
5	0.0
85	0.5
163	1.0
240	1.5
320	2.0
400	2.5
480	3.0

* When selecting an external RT add at least 20% for tolerance of unit and the RT.

Function Diagram



Specifications

Time Delay

Type
Range

Analog circuitry
 5 - 480s (TSU2000)
 0.1 - 8m (TMV8000)
 ±2%

Repeat Accuracy
Tolerance
(Factory Calibration)
Reset Time

≤ ±10%
 ≤ 100ms

Input

Voltage

AC Line Frequency

24 to 240VAC/DC ±20%
 50/60 Hz

Output

Type

Form

Maximum Load Current

Minimum Holding Current

Voltage Drop

Solid State
 NO, open during timing
 1A steady state, 10A inrush at 55°C
 ≤ 40mA
 ≈ 2.5V @ 1A

Protection

Circuitry

Dielectric Breakdown

Insulation Resistance

Encapsulated
 ≥ 2000V RMS terminals to mounting surface
 ≥ 100 MΩ

Mechanical

Mounting

Dimensions

Surface mount with one #10 (M5 x 0.8) screw
H 50.8 mm (2"); **W** 50.8 mm (2");
D 30.7 mm (1.21")
 0.25 in. (6.35 mm) male quick connect

Termination

terminals

Environmental

Operating/Storage

Temperature

Humidity

Weight

-20° to 70°C / -30° to 85°C
 95% relative, non-condensing
 ≈ 2.4 oz (68 g)

Mouser Electronics

Authorized Distributor

Click to View Pricing, Inventory, Delivery & Lifecycle Information:

[Littelfuse:](#)

[TMV8000](#) [TSU2000](#)